

Load Ring VRBS-FIX welded on boltable plate VRBG-FIX-31,5t

Artikel-Nr: 7910591



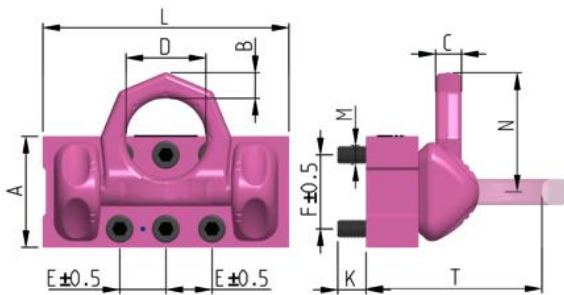
Load ring threaded with full working load in all directions and split force introduction.

- Split force introduction due to multiple point fixing.
- Suspension ring pivots 180°.
- 100% WLL at 90 degrees in the load ring plane possible.
- Clear marking of the minimum WLL for all loading directions.
- Patented markings for easy determination for withdraw of service.
- Original RUD bolt available as spare part.
- Component according to the test criterias of BG/DGUV "GS-HM 36".
- Assembly with allen key possible.
- Hand tightening with appropriate wrench is sufficient for a singular lift. Please observe torque instructions when lifting point is permanently installed resp. at constant swivelling operations and tilting/ turning actions.

Other important RUD specific information and specialities to our RUD lifting points can be found in the specific user instruction.

Load Ring VRBS-FIX welded on boltable plate VRBG-FIX-31,5t

Artikel-Nr: 7910591



weight	66.35 kg	146.28 lbs
---------------	----------	------------

Nominal WLL	31500 kg	69440 lbs
--------------------	----------	-----------

T	288 mm	11-11/32"
----------	--------	-----------

A	180 mm	7-1/16"
----------	--------	---------

B	42 mm	1-21/32"
----------	-------	----------

C	42 mm	1-21/32"
----------	-------	----------

D	130 mm	5-1/8"
----------	--------	--------

E	75 mm	2-15/16"
----------	-------	----------

F	120 mm	4-3/4"
----------	--------	--------

K	46 mm	1-13/16"
----------	-------	----------

L	400 mm	15-3/4"
----------	--------	---------

M	M30 mm	M30
----------	--------	-----

N	195 mm	7-11/16"
----------	--------	----------