

Adaptor ASPA M20/M10

Artikel-Nr: 7995682



Thread adapters should only be used as a reducer for already existing threads to allow the attachment of high tensile RUD lifting points. The thread adapters are marked with the inside and outside thread diameters.

Attention: Never use DIN 580 or standard type eyebolts in combination with RUD thread adapters!

The WLL of the adapter is matched to the WLL of the RUD lifting point.

The thread adapter provides spanner flats for a wrench, a groove for a hook spanner and a hole for an assembly pin.

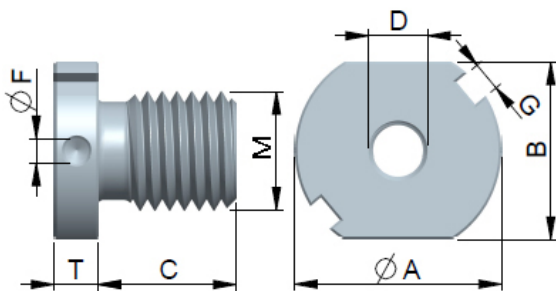
Care must be taken to ensure that the thread adapter is fully engaged and that the shoulder of the adapter accurately meets the bolt-on surface of the work piece. If the thread adapter is permanently installed on the work piece, RUD recommends applying the same torque as that stated for the RUD lifting point.

To avoid misuse in combination with DIN 580 or standard type eye bolts, RUD recommends to secure the high tensile RUD lifting point into the thread adapter with 'Locite' or similar.

Generally, all lifting points which are permanently on the work piece, should always be secured, e.g. with 'Locite' or similar.

Adaptor ASPA M20/M10

Artikel-Nr: 7995682



weight	0.11 kg	0.24 lbs
T	9 mm	11/32"
A	38 mm	1-1/2"
B	32 mm	1-1/4"
C	24 mm	15/16"
D	M10 mm	M10
F	5 mm	13/64"
G	6 mm	15/64"
M	M20 mm	M20